

Quiz No. 3 (Graded)**True/False**

Indicate whether the statement is true or false.

- ___ 1. The physical components of the computer are called software.
- ___ 2. A multiuser OS allows for more than one user at the same time.
- ___ 3. COBOL is an example of a low-level programming language.
- ___ 4. A ring topology connects each node to form a closed loop.
- ___ 5. Real numbers are numbers that contain decimal points.
- ___ 6. Yahoo! Mail is an example of Web-based e-mail client.
- ___ 7. An e-mail address is required to send and receive e-mail messages.
- ___ 8. Employers must notify employees before reading their e-mail messages.
- ___ 9. The formatting associated with the heading tags varies between Web browsers.
- ___ 10. The horizontal rule tag must be paired.

Multiple Choice

Identify the choice that best completes the statement or answers the question.

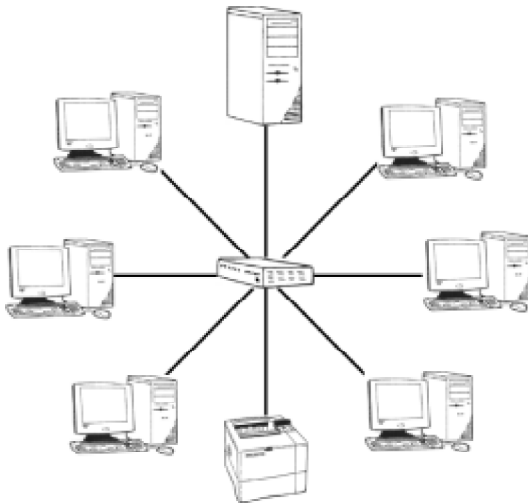
- ___ 11. How many states do the electrical circuits on an IC (integrated circuit) have?
 - a. one: on
 - b. two: on, off
 - c. four: + - * /
 - d. three: on, off, wait
- ___ 12. A bit is
 - a. a single 0 or 1 in the binary code.
 - b. eight 0s or 1s.
 - c. a person's name stored in memory.
 - d. equal to 64K of RAM.
- ___ 13. Which is how a base 2 number is written?
 - a. 100^2
 - b. 100_2
 - c. 100_2
 - d. 100 b_2
- ___ 14. Computer memory capacity and file size are measured in
 - a. bytes.
 - b. inches.
 - c. nanoseconds.
 - d. codes.
- ___ 15. Which prevents unauthorized network access?
 - a. a hub
 - b. a router
 - c. a firewall
 - d. a cookie
- ___ 16. An ISDN is a
 - a. cable modem.
 - b. conventional modem.
 - c. subscriber line.
 - d. digital telephone network.

- ___ 17. In the e-mail address `christina@lpdatafiles.com`, which part is the user name?
 - a. christina
 - b. @
 - c. lpdatafiles
 - d. .com
- ___ 18. Which is a process of copying a file from a Web site to a user's computer?
 - a. uploading
 - b. downloading
 - c. telecommunications
 - d. ergonomics
- ___ 19. A Web beacon
 - a. helps protect the privacy of an individual.
 - b. helps you search and access information on the Web.
 - c. is a computer virus.
 - d. is a tiny transparent graphic used to collect data about Web page users.
- ___ 20. Which is not a parameter required by the `<applet>` tag?
 - a. name of the applet
 - b. background color
 - c. width
 - d. height

Completion

Complete each statement.

- 21. The diagram below illustrates a _____ topology.



- 22. In binary code, an 8-bit unit is called a _____.
- 23. The number of bytes of data a 3GB hard drive can store is _____.
- 24. The _____ tag defines the section that contains information about the HTML document, including its title.
- 25. An HTML document is saved with a _____ extension.

Quiz No. 3 (Graded) Answer Section

TRUE/FALSE

- | | | |
|------------|--------|--|
| 1. ANS: F | PTS: 1 | TOP: Desktop Computing |
| 2. ANS: T | PTS: 1 | TOP: Operating Systems and Environment |
| 3. ANS: F | PTS: 1 | TOP: Programming Languages |
| 4. ANS: T | PTS: 1 | TOP: Networks |
| 5. ANS: T | PTS: 1 | TOP: Storing Data in Memory |
| 6. ANS: T | PTS: 1 | TOP: Internet Services: Web, E-mail, and Mailing Lists |
| 7. ANS: T | PTS: 1 | TOP: Internet Services: Web, E-mail, and Mailing Lists |
| 8. ANS: F | PTS: 1 | TOP: The Social and Ethical Implications of Computer Use |
| 9. ANS: T | PTS: 1 | TOP: HTML Tags |
| 10. ANS: F | PTS: 1 | TOP: HTML Tags |

MULTIPLE CHOICE

- | | | |
|------------|--------|---|
| 11. ANS: B | PTS: 1 | TOP: Number Systems |
| 12. ANS: A | PTS: 1 | TOP: Number Systems |
| 13. ANS: B | PTS: 1 | TOP: Number Systems |
| 14. ANS: A | PTS: 1 | TOP: Storing Data in Memory |
| 15. ANS: C | PTS: 1 | TOP: Intranet, Extranet, Internet |
| 16. ANS: D | PTS: 1 | TOP: Telecommunications |
| 17. ANS: A | PTS: 1 | TOP: Internet Services: Web, E-mail, and Mailing Lists |
| 18. ANS: B | PTS: 1 | TOP: Finding Information on the Web and Downloading Files |
| 19. ANS: D | PTS: 1 | TOP: Internet Privacy Issues |
| 20. ANS: B | PTS: 1 | TOP: Placing an Applet in an HTML Document |

COMPLETION

- | | | |
|---------------|--------|---------------------|
| 21. ANS: star | | |
| | PTS: 1 | TOP: Networks |
| 22. ANS: byte | | |
| | PTS: 1 | TOP: Number Systems |

23. ANS:
3,221,225,460
3221225460
3000000000
3 billion
approximately 3,000,000,000
approximately 3 billion

PTS: 1 TOP: Storing Data in Memory

24. ANS:
head
<head>

PTS: 1 TOP: Creating an HTML Document

25. ANS:
.htm
htm

PTS: 1 TOP: Creating an HTML Document